

Laparoscopic Surgery

Laparoscopic surgery is a minimally invasive technique. Using special instruments and technology, this technique is performed through small incisions.

Robotic Surgery

The da Vinci® Surgical System delivers a high-resolution, 3-D image of the surgical field, magnified 10 times to the surgeon. Robotic surgery offers patients a faster return to their normal daily activities.

Microwave Ablation (MWA) and Radiofrequency Ablation (RFA)

Ablation is a technology that uses heat to destroy tumors. This procedure is performed through the skin, laparoscopically or during open surgery.

Intrahepatic Chemotherapy and Radiation Therapy

This treatment involves infusing chemotherapy or radiation directly into the liver.

For A Consultation

We encourage you to contact us if you have questions, would like more information about our services, or are in need of a second opinion. We always welcome new patients and invite medical professionals to contact us for consultations or patient referrals.

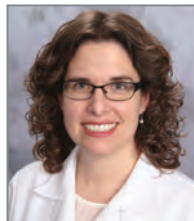
For more information, please call (518) 525-5207.



JASON T. HECKMAN, MD

is a specialist in liver, pancreas, general and advanced laparoscopic surgery. Dr. Heckman has been trained in cutting-edge techniques to perform minimally invasive liver and pancreas surgery.

- Education, University of Rochester School of Medicine & Dentistry, Rochester, NY
- Residency, Department of Surgery Montefiore Medical Center, Albert Einstein College of Medicine, Bronx, NY
- Fellowship, Hepatobiliary Surgery, University of Pittsburgh Medical Center, Pittsburgh, PA
- Fellow of the American College of Surgeons
- Board Certification, American Board of Surgeons
- Dr. Heckman is an attending surgeon at St. Peter's Hospital, Albany, NY
- Clinical Assistant Professor, Department of Surgery, Albany Medical College, Albany, NY



REBECCA L. KEIM, MD

is a specialist in liver, pancreas, general and advanced laparoscopic surgery. Dr. Keim has been trained in cutting-edge techniques to perform minimally invasive liver and pancreas surgery.

- Education, Medical College of Wisconsin, Milwaukee, WI
- Residency, Medical College of Wisconsin, Milwaukee, WI
- Fellowship, Hepatopancreatobiliary Surgery at the Medical College of Wisconsin, Milwaukee, WI
- Fellow of the American College of Surgeons
- Board Certification, American Board of Surgeons
- Dr. Keim is an attending surgeon at St. Peter's Hospital, Albany, NY
- Clinical Assistant Professor, Department of Surgery, Albany Medical College, Albany, NY

HEPATOBIILIARY & PANCREATIC SURGERY

319 South Manning Boulevard | Suite 304
Albany, New York 12208
ph (518) 525-5207 | fx (518) 525-5209
albanylps.com

Hepatobiliary & Pancreatic Surgery

Our Services

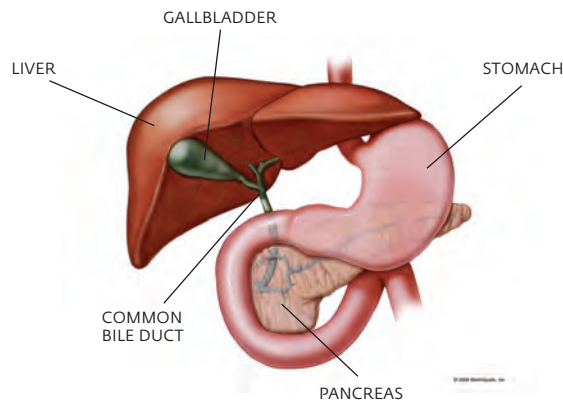
We are here to help you understand the complex diseases of the liver, bile ducts and pancreas, as well as guide you through the treatment options best suited for you.

We take a multidisciplinary approach to patient care. We conduct biweekly conferences with a team of specialists from oncology, surgery, radiation oncology, radiology, pathology and gastroenterology to assess the best treatment options for patients.

This brochure provides an overview of diseases affecting the hepatobiliary system as well as the surgical techniques available.

What does Hepatobiliary Mean?

Hepatobiliary refers to the liver and its closely associated functioning with the gallbladder, bile ducts and pancreas. These organs work together to aid the body in digestive and endocrine, or regulatory, functions. Many disorders and diseases can affect these organs which require medical care.



The Liver

The liver is one of the largest organs in the human body and has many functions including:

- Processing food and changing it into energy
- Breaking down toxic substances within the body
- Storing iron reserves, vitamins and minerals
- Creating bile, which aids in digestion

Some conditions that affect the liver may include:

Liver Tumors

Cancers can develop in many areas of the liver and come in many forms.

- HCC (hepatocellular carcinoma)
- Bile Duct Cancer (cholangiocarcinoma)
- Metastatic Colorectal Cancer
- Neuroendocrine Tumors
- Other Metastatic Tumors

Benign Liver Lesions

- Hepatic Cyst
- Hemangioma
- Hepatic Adenoma
- Focal Nodular Hyperplasia (FNH)

The Pancreas

The pancreas is an organ behind the stomach and in front of the spine. The two primary functions of the pancreas are to produce fluids to help break down food and to produce hormones that help control blood sugar.

Conditions affecting the pancreas include:

- Pancreatic Cancer
- Pancreatitis
- Pseudocyst
- Cystic Neoplasms

The Gallbladder and Bile Ducts

After being produced by the liver, bile is secreted into the bile ducts and stored in the gallbladder. Bile aids in the digestion of fats.

Some conditions affecting the bile ducts and gallbladder include:

- Gallstones
- Stricture
- Bile Leaks (caused by trauma and surgery)
- Cancer (cholangiocarcinoma/gallbladder)

Your Office Visit

When you entrust your care to us, you will be treated with compassion and your case will be examined thoroughly. We will create a personalized treatment plan developed in collaboration with a multidisciplinary team of specialists. Our focus is to help you understand your diagnosis and treatment options available.

When visiting for a consultation, you should bring any previous biopsies, medication lists, medical records and test results. Diagnostic scans can be scheduled and completed on the same day as your consultation. We encourage a family member to accompany the patient for support.



Surgery at St. Peter's Hospital

We utilize the surgical suites at St. Peter's Hospital. These suites offer the most advanced technologies including robotic, computer-assisted and image-guided surgical devices, which enable the highest level of patient care. St. Peter's Hospital pairs its state-of-the-art equipment with skilled nurses and technical staff.

Your Surgery

Surgical removal of hepatobiliary cancer offers the best chance of cure. The multidisciplinary team has been trained in the most advanced techniques. After reviewing your case, the team will decide which treatment is right for you.

Open Surgery

Depending on the operation to be performed, an incision will be made down the middle of your abdomen, or under the right or left ribcage. Prior to open surgery, some patients may undergo diagnostic laparoscopy, the placement of a small camera through tiny incisions. This is done to make sure there is no spread of the cancer prior to open surgery.